

DC1000

E1 G.703 X.21 Converter

Network Technologies Dtl.d. GmbH is a German based distributor of high performance ATM and non-ATM access products for companies with high speed leased line connectivity problems. Its products are now used by more than 200 companies worldwide, providing the key to operational networking solutions. Our supplier for products in this market segment is Metrodata Ltd., UK. By controlling all research & development and manufacturing, Metrodata is able to respond quickly to market demands and deliver customer satisfaction from a single point of contact.



COST EFFECTIVE E1 G.703 2-048 MBIT/S INTERFACING

X.21 DTE PORT FOR ROUTER CONNECTION

EASY TO INSTALL AND MAINTAIN

BUILT TO EUROPEAN STANDARDS

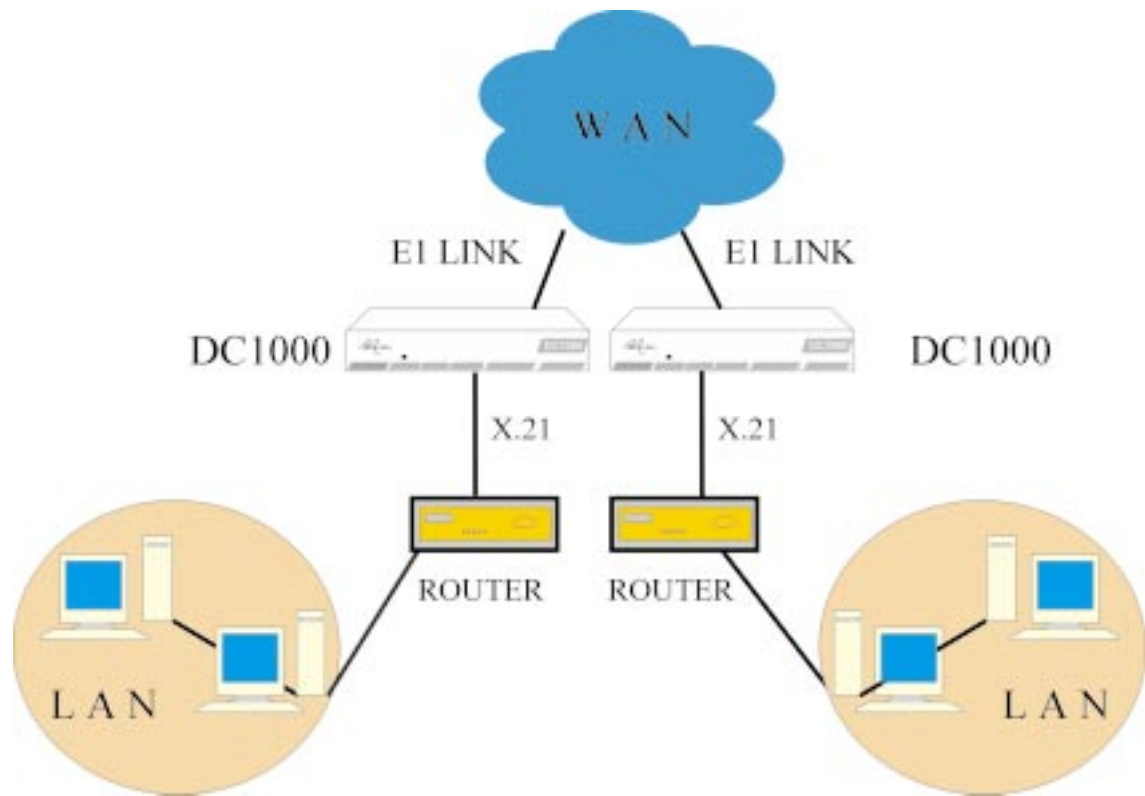
Metrodata

communicating solution

Distributed by: **Network Technologies Dtl.d. GmbH**

PTNo. 79-03-032A

DC1000



Specifications

LINE E1 INTERFACE

Port: G.703, 75 ohm unbalanced
Interface: BNC (75 ohm)
Line Coding: HDB3
Bit rate: 2.048 Mbit/s \pm 50 ppm
Barrier: Fully barriered per EN 41003
Cable lengths: RG59 600m
UR202 750m

DTE INTERFACE

Port: X.21
Interface: X.21: 15 way D-type
Bit Rate: 2.048 Mbit/s

CONFIGURATION

Clocks: Internal, E1 loop set by dip switches

STATUS DISPLAY/DIAGNOSTICS

Alarms: Single Status LED
Off: Power: Off
Red: Loss of Signal (LOS)
Green: OK.

COMPLIANCE & APPROVALS

Performance: OTR.001
Safety: EN41003, EN60950
EMC: EN55022, EN50082

POWER SUPPLY

220-250 VAC, 50-60 Hz, 0.25A, IEC

ENVIRONMENTAL

Temp: 0-35 Deg C, 0-95% RH, non-condensing
Pressure: 86KPa - 106KPa

PACKAGING

Type: Modem
Dimensions: 260 x 215 x 47 mm (WxDxH) - Enclosure only
Overall including feet - 260 x 215 x 51 mm

YEAR 2000: Year 2000 compliant

ORDERING INFORMATION

POWER SUPPLY	100-250 VAC	
LINE INTERFACE	DTE INTERFACE	PART NUMBER
BNC	X.21	80-05-202

Distributed by: **Network Technologies Dtl.d. GmbH**

Bernhardstrasse 10, D-53902 Bad Muenstereifel, GERMANY

Tel: +49 (2253) 92 42 0 Fax: +49 (2253) 92 42 29 e-mail: info@ntdgmbh.de WWW: <http://www.ntdgmbh.de>