

FM4000

E1 (Nx64K) G.703/G.704 X.21/V.35

Network Technologies Dtl.d. GmbH is a German based distributor of high performance ATM and non-ATM access products for companies with high speed leased line connectivity problems. Its products are now used by more than 200 companies worldwide, providing the key to operational networking solutions. Our supplier for products in this market segment is Metrodata Ltd., UK. By controlling all research & development and manufacturing, Metrodata is able to respond quickly to market demands and deliver customer satisfaction from a single point of contact.



HIGH SPEC E1 G.703 2-048 MBIT/S INTERFACING

FRACTIONAL E1 BY ALLOCATING Nx64KBIT/S CHANNELS

X.21 OR V.35 DTE PORTS

REMOTE CONFIGURATION AND TESTING OF UNITS ACROSS THE NETWORK

COMPREHENSIVE PERFORMANCE MONITORING

OPTIONAL SNMP MANAGEMENT

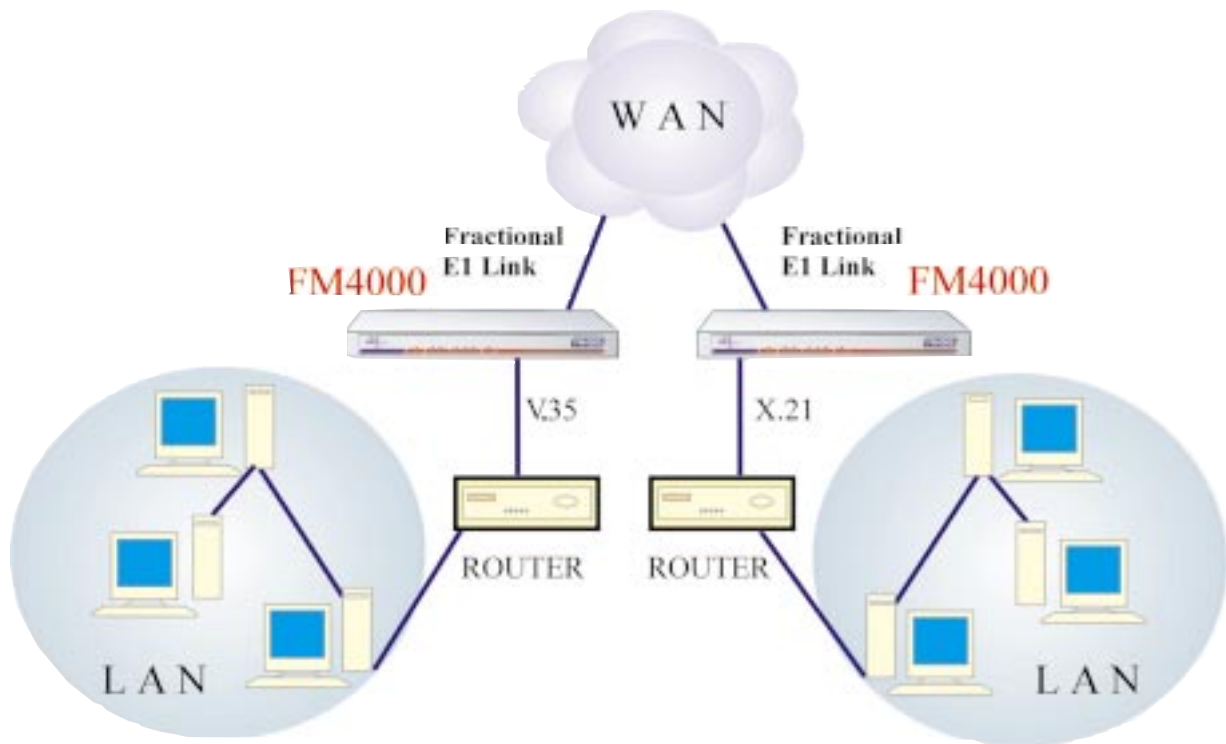
Metrodata

communicating solutions

distributed by: **Network Technologies Dtl.d. GmbH**

PTNo. 79-03-007F

FM4000



Specifications

LINE E1 INTERFACE

Port: G.703, 75 ohm unbalanced, 120 ohm balanced
 Framing: G.704 (with or without CRC4) or Unframed
 Interface: BNC (75 ohm), RJ45 (120 ohm)
 Line Coding: HDB3
 Bit rate: 2.048 Mbit/s \pm 50 ppm
 Cable lengths:
 E1 BNC RG59 600m
 E1 BNC UR202 750m
 E1 RJ45 Belden 8132 175m
 E1 RJ45 Belden 9841 300m

DTE INTERFACE

Port: X.21 or V.35
 (EIA530, RS449 with external cables)
 Interface:
 X.21: ISO4903, 15 way D-type
 V.35: ISO2593, 34 way M-rack
 EIA530: 25 way D-type
 RS449: ISO4902, 37 way D-type
 Bit rate: 2.048 Mbit/s or Nx64Kbit/s (N=1 to 31)

CONFIGURATION AND MANAGEMENT

Type: Menu driven
 Access: System console, Telnet, SNMP
 Interface: V.24, Ethernet 10 BaseT via RJ45
 Security: Access by two level password
 System: Non-volatile set-up
 Clock modes: Internal, E1 loop or DTE (CCITT cct 113)

STATUS DISPLAY/DIAGNOSTICS

Loopbacks: Local loop, Remote loop
 BERT: 2¹⁵-1 PRBS, Nx64Kbit/s
 Statistics: Per G.821, 15 min, 24 hour totals
 Alarms: MAJOR (LOS, LOF, SQ)
 MINOR (AIS, RAI)
 Data: DTE Tx Data, DTE Rx Data, DTE Fault
 Test: TEST

ORDERING INFORMATION

POWER SUPPLY		100-250 VAC	-48V DC
LINE INTERFACE	DTE INTERFACE	PART #	PART #
BNC	X.21	80-05-005	80-21-005
BNC	V.35	80-05-006	80-21-006
RJ45	X.21	80-05-007	80-21-007
RJ45	V.35	80-05-008	80-21-008
LM1100 SNMP ENABLER		14-02-139	14-02-139

COMPLIANCE & APPROVALS

Performance: G.703, G.704, G.706, G.823
 BNC version: OTR.001 2DS, BAPT # NS/4043/1/P/603813
 RJ45 version: CTR12, CTR13, BAPT # AA606631
 Safety: EN41003, EN60950
 EMC: EN55022, EN50082
 Statistics: G.821, AT&T 54016: 15 min, 24 hour totals
 RFC1213 (MIB-II), RFC495 (Telnet),
 RFC1157(SNMP), RFC1406 (DS1/E1),
 metroDte MIB (DSU), RFC1215 (Traps)

POWER SUPPLY

100-250 VAC, 50-400Hz, 0.5A, IEC or -48VDC

ENVIRONMENTAL

Temp: 0-35°C, 0-95% RH, non-condensing
 Pressure: 86KPa - 106KPa

PACKAGING

Type: 1U x 19 inch
 Dimensions: 435 x 213 x 44 mm (WxDxH)

YEAR 2000: Year 2000 compliant

Distributed by: **Network Technologies Dtl.d. GmbH**

Bernhardstrasse 10, D-53902 Bad Muenstereifel, GERMANY

Tel: +49 (2253) 92 42 0 Fax: +49 (2253) 92 42 29 e-mail: info@ntdgmbh.de WWW: http://www.ntdgmbh.de