

FM4900

FM4900

E3 to HSSI Converter

Network Technologies Dtl.d. GmbH is a German based distributor of high performance ATM and non-ATM access products for companies with high speed leased line connectivity problems. Its products are now used by more than 200 companies worldwide, providing the key to operational networking solutions. Our supplier for products in this market segment is Metrodata Ltd., UK. By controlling all research & development and manufacturing, Metrodata is able to respond quickly to market demands and deliver customer satisfaction from a single point of contact.



HIGH SPEC E3 G.703 34-368 MBIT/S INTERFACING

HSSI DTE PORT

REMOTE CONFIGURATION AND TESTING OF UNITS ACROSS THE NETWORK

COMPREHENSIVE PERFORMANCE MONITORING

OPTIONAL SNMP MANAGEMENT

BUILT TO EUROPEAN STANDARDS

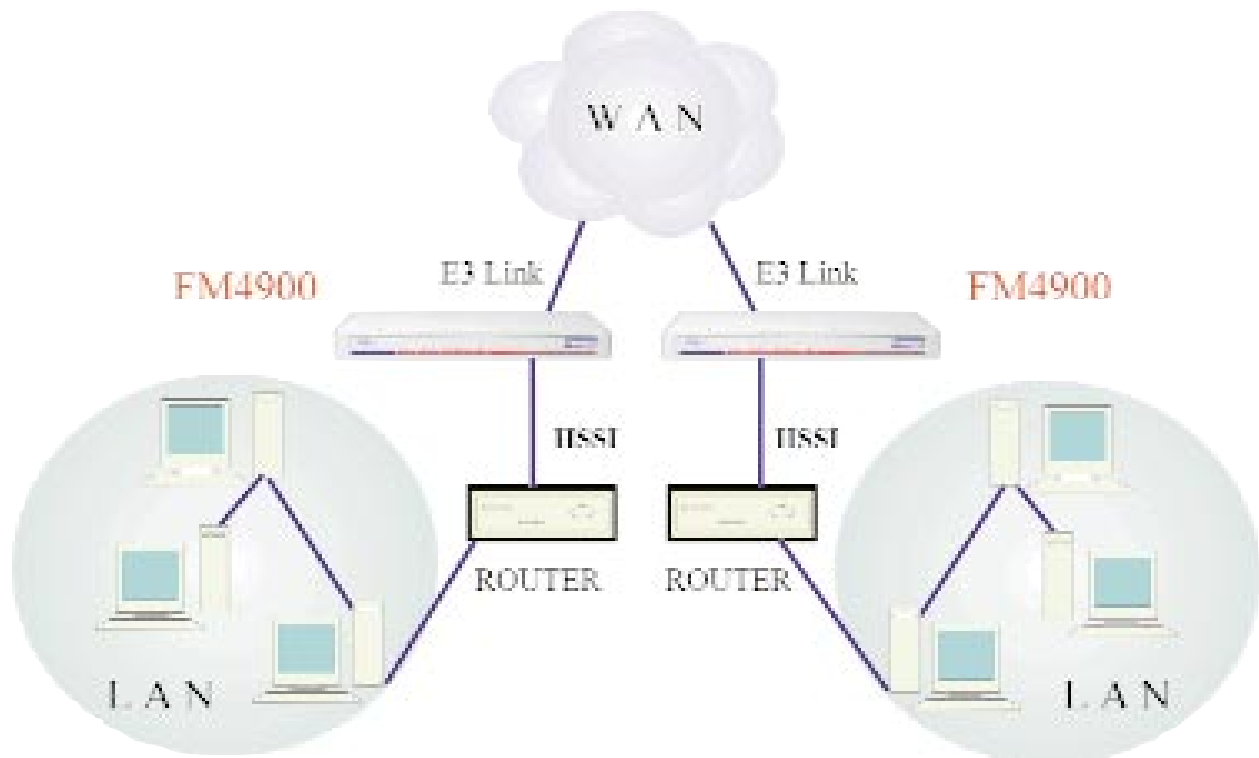
Metrodata

communicating solutions

Distributed by: **Network Technologies Dtl.d. GmbH**

PTNo. 79-03-011F

FM4900



Specifications

LINE E3 INTERFACE

Port: G.703, 75 ohm unbalanced
 Framing: G.751 or Unframed
 Interface: BNC (75 ohm)
 Line Coding: HDB3
 Bit rate: 34-368 Mbit/s \pm 20 ppm
 Cable lengths: E3 BNC RG59 150m
 E3 BNC UR202 180m

DTE INTERFACE

Port: HSSI per EIA613, EIA612
 Interface: 50 way AMP (SCSI II connector)
 Bit rate: 34-368 Mbit/s (LINE unframed)
 34-099 Mbit/s (LINE framed)

CONFIGURATION AND MANAGEMENT

Type: Menu driven
 Access: System console, Telnet, SNMP
 Interface: V.24, Ethernet 10 BaseT via RJ45
 Security: Access by two level password
 System: Non-volatile set-up
 Clock modes: Internal, E3 loop

STATUS DISPLAY/DIAGNOSTICS

Loopbacks: NI Local loop, NI Remote loop, DTE loop,
 DTE External loop
 Statistics: Per G.821, 15 min, 24 hour totals
 Alarms: MAJOR (LOS, LOF, SQ)
 MINOR (AIS, RAI)
 Data: DTE Tx Data, DTE Rx Data, DTE Fault
 Test: TEST

COMPLIANCE & APPROVALS

Performance: NTR6
 BAPT # NS/4043/1/V/606274
 CTR24 (pending)
 G.703, G.751, G.823
 Safety: EN41003, EN60950
 EMC: EN55022, EN50082
 Statistics: G.821, AT&T 54016: 15 min, 24 hour totals
 Management: RFC1213 (MIB-II), RFC495 (Telnet),
 RFC1157 (SNMP), RFC1407 (DS3/E3),
 metroDte MIB (DSU), RFC1215 (Traps)

POWER SUPPLY

100-250 VAC, 50-400Hz, 0.5A, IEC or -48VDC

ENVIRONMENTAL

Temp: 0-35°C, 0-95% RH, non-condensing
 Pressure: 86KPa - 106KPa

PACKAGING

Type: 1U x 19 inch
 Dimensions: 435 x 213 x 44 mm (WxDxH)

YEAR 2000: Year 2000 compliant

ORDERING INFORMATION

POWER SUPPLY		100-250 VAC	-48V DC
LINE INTERFACE	DTE INTERFACE	PART #	PART #
BNC	HSSI	80-05-015	80-21-015
LM1100 SNMP ENABLER		14-02-139	14-02-139

Distributed by: **Network Technologies Dtl.d. GmbH**

Bernhardstrasse 10, D-53902 Bad Muenstereifel, GERMANY

Tel: +49 (2253) 92 42 0 Fax: +49 (2253) 92 42 29 e-mail: info@ntdgmbh.de WWW: http://www.ntdgmbh.de